

GENERAL TECHNICAL DATA

dimensions:

- height: 28 1/8 inches
- width: 50 3/8 inches
- depth: 25 3/16 inches

- weight:**
- using softwood 174 lb
 - using hardwood 185 lb

- materials:**
- stainless or carbon steel
 - softwood or hardwood

DESCRIPTION

Welded structure combined with wooden planks. Welded 0 1/8" thick steel sheet structure made of carbon steel ASTM A36 galvanised and powder coated in accordance with RAL palette, or entirely of stainless steel AISI 304SS. ground. Bench seat using 14 wooden planks with a rectangular cross-section of 1 1/2 x 3 5/32" and varying in length from 15 15/16 to 24 9/16". Softwood impregnated and varnished twice or hardwood impregnated and oiled twice.

All street furniture elements must be properly anchored according to the manufacturer's technical instructions. The manufacturer is not liable for damage caused by negligent use or failure to follow instructions.



ZANO
SINCE 1998

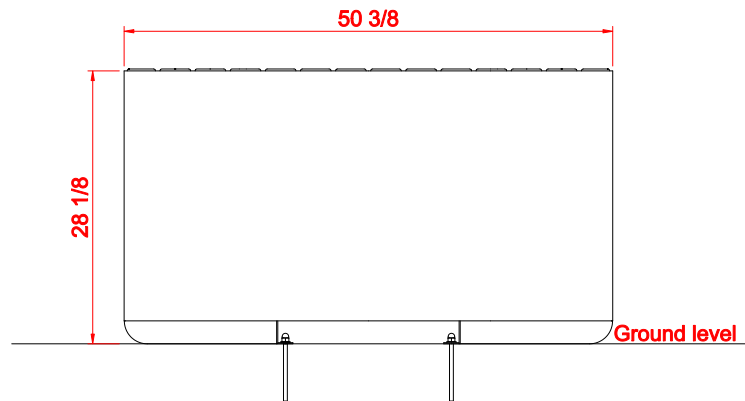


Filip Babiarz

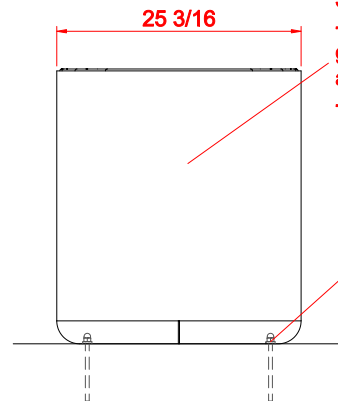
product:
bench UNIVERSE 02.455.4
version: 1
designer: Filip Babiarz

In accordance with the Polish Law on Copyright and Related Rights of 04.02.1994 (Official Journal of Laws No. 24, item 83, corrected: Journal of Laws No. 43, item 170) and in accordance with the EU copyright legislation including all EU directives and regulations on copyright, Zano Mirosław Zarotyński Company, reserves the copyright of drawings, descriptions, 3D models, renderings, graphics, content contained in offers, attachments to offers and all other documents. Its content is the intellectual property of ZANO Mirosław Zarotyński company. The use of author's ideas, solutions, copying, distribution of photos, graphics or fragments of graphics, descriptive texts, for profit, without the permission of the author - ZANO Mirosław Zarotyński company - is prohibited and constitutes a copyright infringement and is punishable.

FRONT VIEW



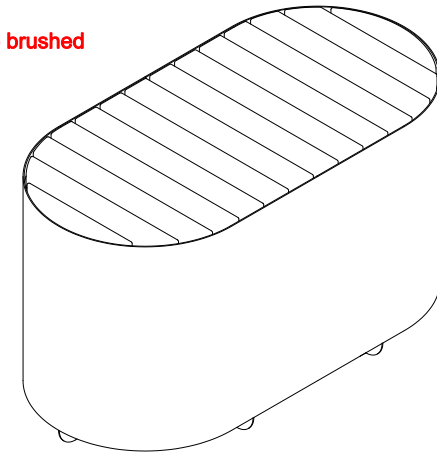
SIDE VIEW



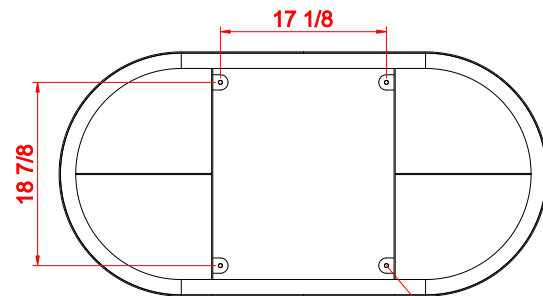
Steel types:
 - Construction steel (S235JR, DC01)
 galvanized and powder coated
 according to RAL palette
 - Stainless steel (1.4301) brushed

Installation:
 - Attached by
 bolts to foundation

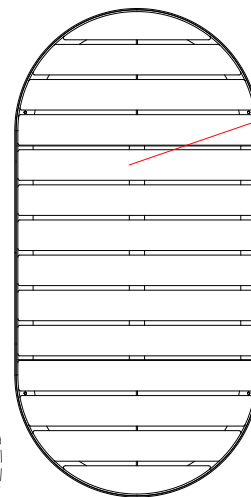
ISOMETRIC VIEW



MOUNTING HOLES SPACING



TOP VIEW

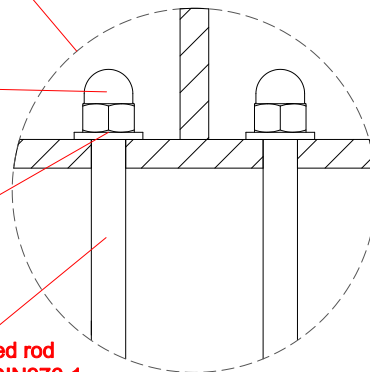


Wood types:
 - Soft wood, lacquered
 - Hard wood, oiled

4x Nut
 M10 DIN1587

4x Washer
 M10 DIN125

4x Threaded rod
 M10x150 DIN976-1



Dimensions given in [inches]

Universe bench 02.455.4

In accordance with the Polish Law on Copyright and Related Rights of 04.02.1994 (Official Journal of Laws No. 24, item 83, corrected: Journal of Laws No. 43, item 170) and in accordance with the EU copyright legislation including all EU directives and regulations on copyright, Zano Mirosław Zarotyński Company, reserves the copyright of drawings, descriptions, 3D models, renderings, graphics, content contained in offers, attachments to offers and all other documents. Its content is the intellectual property of ZANO Mirosław Zarotyński company. The use of author's ideas, solutions, copying, distribution of photos, graphics or fragments of graphics, descriptive texts, for profit, without the permission of the author - ZANO Mirosław Zarotyński company - is prohibited and constitutes a copyright infringement and is punishable.



ZANO Street Furniture
 Lindego 7A, 30-148
 Cracow, Poland
 phone: +48 12 200 20 53
 email: office@zano.pl

Number:	170920-v1		
Sheet:	A4		
Scale:	1:20		
Mass:	with soft wood	174 lb	
	with hard wood	185 lb	