

## GENERAL TECHNICAL DATA

### dimensions:

- height: 16 7/8 inches
- width: 50 3/8 inches
- depth: 50 3/8 inches

- weight:**
- using softwood 363 lb
  - using hardwood 456 lb

- materials:**
- stainless or carbon steel
  - softwood or hardwood

## DESCRIPTION

Welded structure combined with wooden planks. Welded 1/8 " thick steel sheet structure made of carbon steel ASTM A36, galvanized and powder coated in accordance with RAL palette, or entirely of stainless steel AISI 304SS ground. Bench seat using 14 wooden planks with a rectangular cross-section of 1 1/2" x 3 5/32" and varying in length from 15 15/16" to 24 9/16". Softwood impregnated and varnished twice or hardwood impregnated and oiled twice.

All items of street furniture must be properly anchored according to the manufacturer's technical instructions. The manufacturer is not liable for damage caused by negligent use or failure to follow instructions.



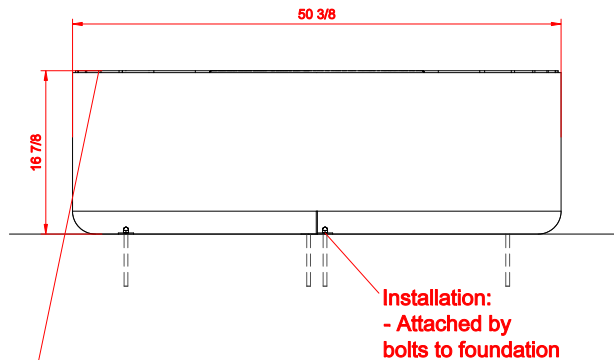
*Filip Babiarz*

product:  
bench UNIVERSE 02.455.5  
version: 1  
designer: Filip Babiarz

In accordance with the Polish Law on Copyright and Related Rights of 04.02.1994 (Official Journal of Laws No. 24, item 83, corrected: Journal of Laws No. 43, item 170) and in accordance with the EU copyright legislation including all EU directives and regulations on copyright, Zano Mirosław Zarotyński Company, reserves the copyright of drawings, descriptions, 3D models, renderings, graphics, content contained in offers, attachments to offers and all other documents. Its content is the intellectual property of ZANO Mirosław Zarotyński company. The use of author's ideas, solutions, copying, distribution of photos, graphics or fragments of graphics, descriptive texts, for profit, without the permission of the author - ZANO Mirosław Zarotyński company - is prohibited and constitutes a copyright infringement and is punishable.

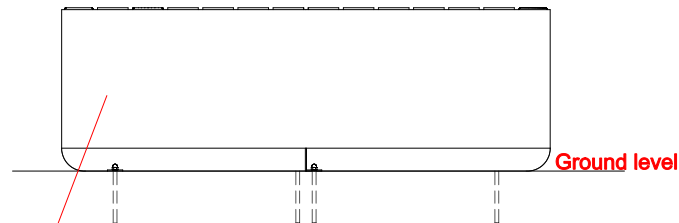


FRONT VIEW



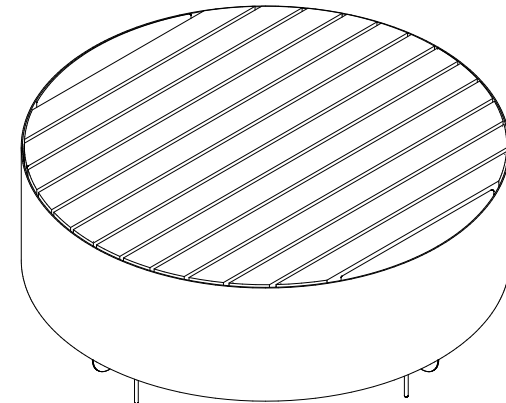
Wood types:  
- Soft wood, lacquered  
- Hard wood, oiled

SIDE VIEW

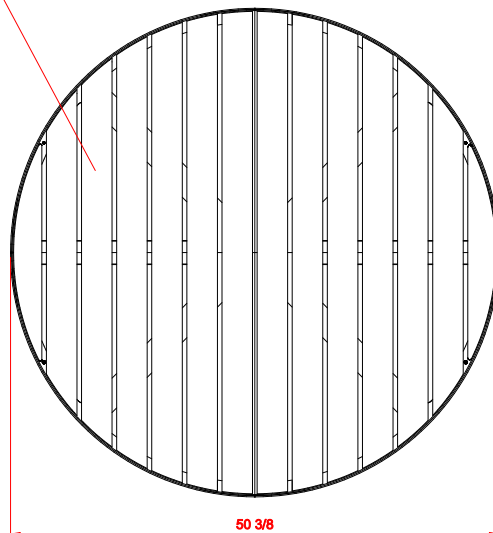


Steel types:  
- Construction steel ( S235JR, DC01) galvanized and powder coated according to RAL palette  
- Stainless steel ( 1.4301) brushed

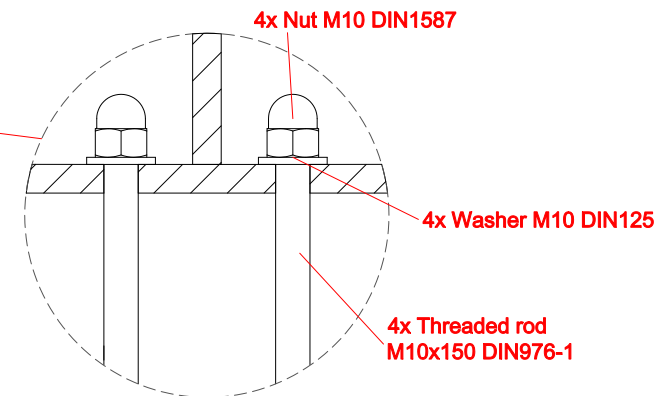
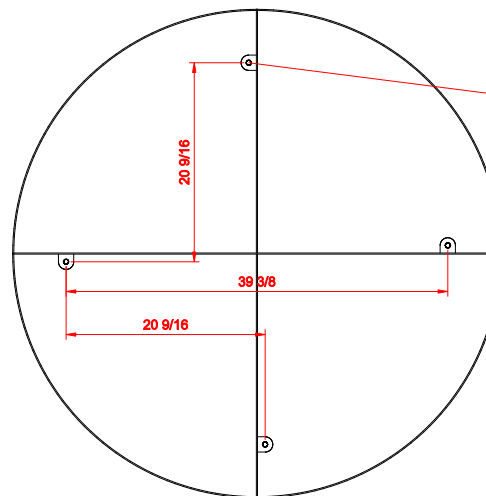
ISOMETRIC VIEW



TOP VIEW



MOUNTING HOLES SPACING



Dimensions given in [inches]

## Universe bench 02.455.5

In accordance with the Polish Law on Copyright and Related Rights of 04.02.1994 ( Official Journal of Laws No. 24, Item 83, corrected: Journal of Laws No. 43, Item 170 ) and in accordance with the EU copyright legislation including all EU directives and regulations on copyright, Zano Miroslaw Zarotylski Company, reserves the copyright of drawings, descriptions, 3D models, renderings, graphics, content contained in offers, attachments to offers and all other documents. Its content is the intellectual property of ZANO Miroslaw Zarotylski company. The use of author's ideas, solutions, copying, distribution of photos, graphics or fragments of graphics, descriptive texts, for profit, without the permission of the author - ZANO Miroslaw Zarotylski company - is prohibited and constitutes a copyright infringement and is punishable.



ZANO Street Furniture  
Lindeggo 7A, 30-148  
Cracow, Poland

phone: +48 12 200 20 53  
email: office@zano.pl

Number:	150920-v1
Sheet:	A4
Scale:	1:20
Mass:	with soft wood 363 lb with hard wood 456 lb